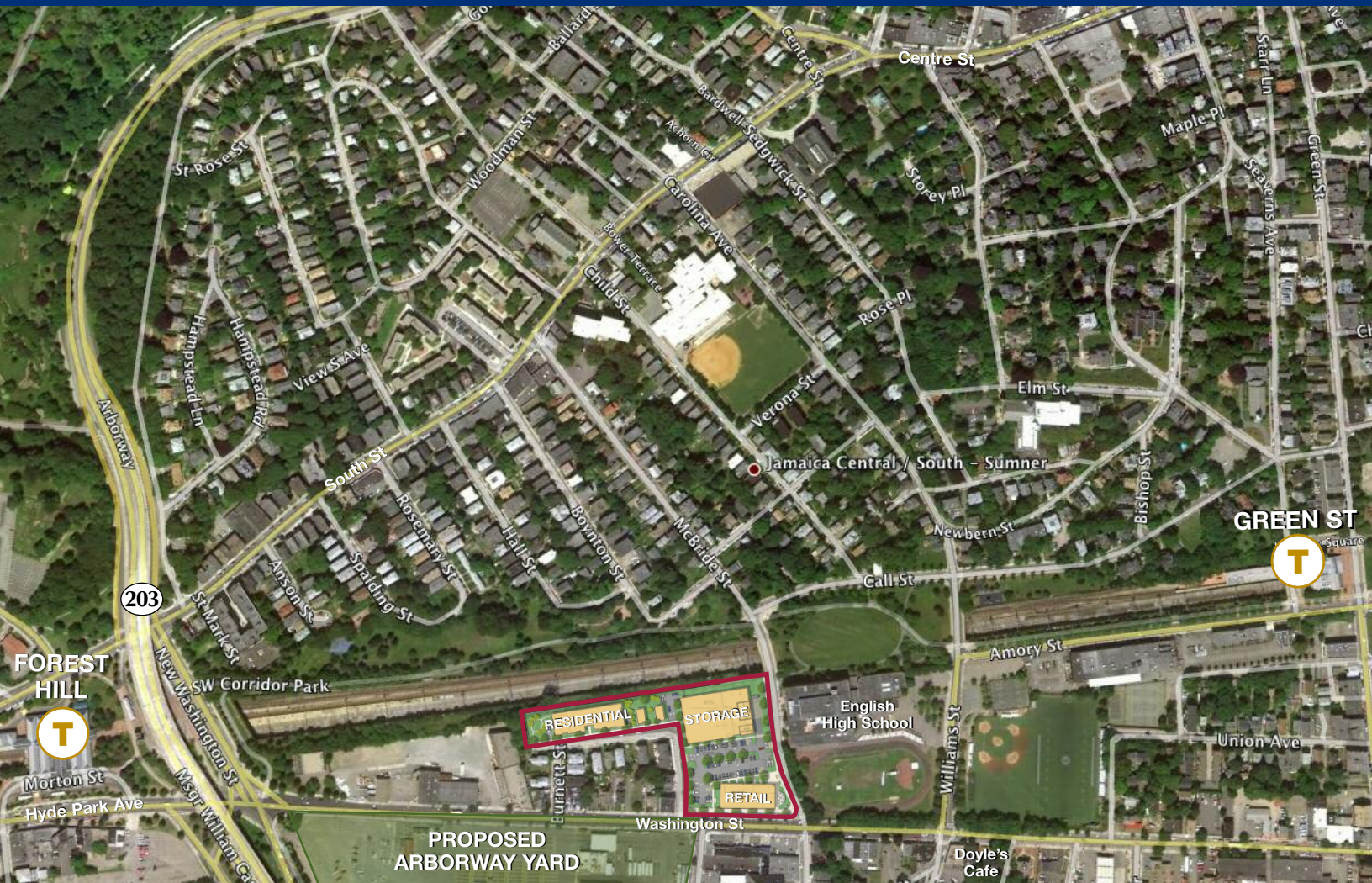


# Jamaica Plain, Boston, MA

3521-3529 WASHINGTON STREET

28,000 SF OF NEW PRIME RETAIL/OFFICE SPACE IN JAMAICA PLAIN



## RESTAURANTS • BANKS • RETAIL • SERVICES • OFFICES

A new two *level* first class retail building will highlight the redevelopment of an old warehouse off 3529 Washington Street in Jamaica Plain. With approximately 14,000 SF on each level the brand new building will be situated directly on Washington Street at the corner of McBride Street with on site as well as off street parking, outdoor patios, and new landscaping. The entire redevelopment includes the addition of new Condominium residences and a brand new Class A storage facility and is located next to the English High School and within walking distance to the Green Street and Forest Hills T stop. Available Summer 2012.

Powers &  
Company

Representing Retail Landlords Throughout New England

# Jamaica Plain

3521-3529 WASHINGTON STREET



**Proposed Condominium Residence**

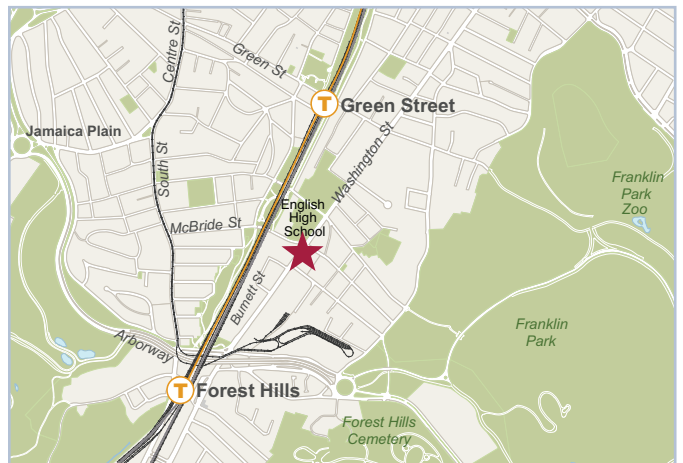


*Renderings subject to change.*

## Specifications

<b>Location</b>	3521-3529 Washington Street, Boston, MA
<b>Available Space</b>	28,000 SF of new retail/office space
<b>Parking</b>	74 spaces on-site plus street parking

<b>Demographics</b>	<b>1 Mile</b>	<b>1.5 Miles</b>	<b>2 Miles</b>
<b>Population Estimate</b>	28,429	75,646	150,305
<b>Average HH Income Estimate</b>	\$78,350	\$66,507	\$67,922



For more information or to schedule a tour,  
please call or e-mail:

Mary Powers at 781-334-4661  
powers.co@verizon.net or  
Leslie Cotter at 781-883-8464  
leslianncotter@yahoo.com

**Powers &  
Company**

*Representing Retail Landlords Throughout New England*

P.O. Box 435 • Lynnfield, MA 01940 • (781) 334-4661  
E-mail: powers.co@verizon.net